

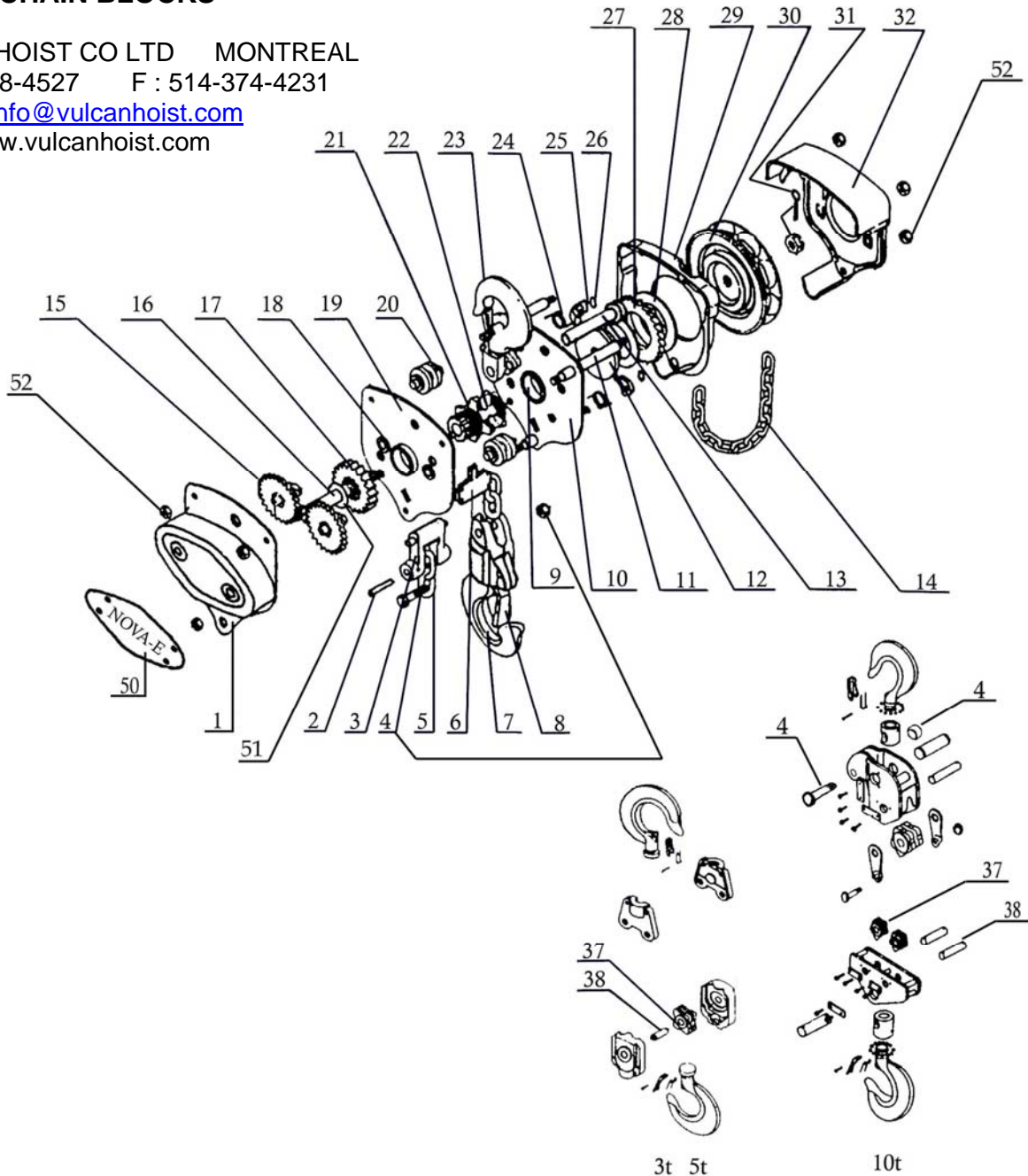
NOVA-E CHAIN BLOCKS

VULCAN HOIST CO LTD MONTREAL

T : 514-728-4527 F : 514-374-4231

E-MAIL : info@vulcanhoist.com

WEB : www.vulcanhoist.com



| Part # | Description | Req. | Part # | Description | Req. | Part # | Description | Req. |
|--------|--------------------------------------|------|--------|------------------------|------|--------|------------------------------|------|
| 1 | Gear cover | 1 | 14 | Hand chain (linear ft) | 1 | 27 | Ratchet gear | 1 |
| 2 | Dead end anchor pin w/cotter pin | 1 | 15 | Pinion w/pinion gear | 2 | 28 | Friction disc | 2 |
| 3 | Dead end anchor | 1 | 16 | Pinion shaft | 1 | 29 | Ratchet gear cover | 1 |
| 4 | Load chain fastening bolt & nut | 1 | 17 | Load gear | 1 | 30 | Hand wheel | 1 |
| 5 | Load chain | 1 | 18 | Gear bushing for #15 | 4 | 31 | Cotter pin + Check nut | 1 |
| 6 | Stripper | 1 | 19 | Gear side plate | 1 | 32 | Hand wheel cover | 1 |
| 7 | Bottom hook assy (incl. w/#4) | 1 | 20 | Load chain guide | 2 | 37 | Sprocket for bottom hook | |
| 8 | Safety latch | 2 | 21 | Bearing rollers | | 38 | Sprocket pin for bottom hook | |
| 9 | Bearing race (incl. w/#10 & 19 Only) | 2 | 22 | Load sheave | 1 | 50 | Name plate | 1 |
| 10 | Wheel side plate assembly | 1 | 23 | Top hook assembly | 1 | 51 | Snap ring for #22 | 1 |
| 11 | Stay bolt (incl. w/#10 Only) | | 24 | Pawl spring | 2 | 52 | Nuts for #1 & #32 | 6 |
| 12 | Disc Hub | 1 | 25 | Pawl | 2 | | | |
| 13 | Yoke pin for top hook | 1 | 26 | Snap ring for pawl pin | 2 | | | |