

PARTS FOR VULCAN ELECTRIC HOIST - LINK CHAIN ONLY

Wt	P/N	Description	
1 lb/ft	1C	Chain – All capacities	
1 lb/ft	1CZ	▪ Zinc chain – All capacities	
1 oz	2	Cotter pin	
¾ lb	2AA3	▪ Limit block set for hoist with #25	
2 lb	4	¼ T Lower hook assembly w /latch & anchor pin	
2 lb	4A	▪ ½ T Lower hook assembly " " "	
2 lb	4AA	▪ 1 T Lower hook assembly " " "	
Other capacity see page 30 & 31			
1lb	4A1	Idler sprocket w / 4A2	} See page 6 & 7
1 oz	4A2	Oilite bushing	
½ lb	4A3	Sprocket pin for casting	
1 oz	4A6	Bolt w /nut ¼" x 2" long x 20 threads, for chain container or dead end of chain	
½ lb	6	Limit spring for hook	
1 oz	8AA	▪ Grummet	
2 oz	8B-1	▪ 2 buttons 1 speed switch only, specify model of push button	
2 oz	8B1-2-2	▪ 2 buttons 2 speeds switch only	
1 lb	8B2-1	Pendant 2 buttons 1 speed w /8AA	} alarm & stop buttons on request from stock
1 lb	8B4-1	▪ Pendant 4 buttons 1 speed "	
2 lb	8B6-1	▪ Pendant 6 buttons 1 speed "	
2 lb	8B8-1	▪ Pendant 8 buttons 1 speed "	
1 lb	8B2-2	▪ Pendant 2 buttons 2 speed "	
1 lb	8B4-2	▪ Pendant 4 buttons 2 speed "	
2 lb	8B6-2	▪ Pendant 6 buttons 2 speed "	
2 lb	8B8-2	▪ Pendant 8 buttons 2 speed "	
2 lb	8B12-2	▪ Pendant 12 buttons 2 speed "	
1 oz/ft	8C	Strain reliever wire w /2 oval sleeves	
1 oz	8D	▪ Plastic tie – 1 per ft. of cable	
2 oz	8E	Push button cable 1 speed – per ft	
2 oz	8F	▪ Push button cable 2 speeds – per ft	
4 oz	9A	▪ Rubber gasket for name plate	
1 oz	9/10	Name plate w /4 screws	
4 oz	11	Strain reliever for power or push-button cable	
2 oz	12	Power cable 1 or 3 phase with 3 or 4 terminals, specify	
2 oz	12B	Coupling for rotor, included with motor specify motor make & H P	
28 lb	13-3/4	Motor ¾ HP 115/230 1 phase 1720 rpm w /4 studs	} Specify serial # , model when ordering
36 lb	13-1.534	▪ Motor 1 ½ HP 115/230 1 phase 3440 rpm " "	
39 lb	13-2	▪ Motor 2 HP 230 1 phase 3440 rpm " "	
21 lb	13A1-18	▪ Motor 1 HP 220/440/575 3 phase 1800 rpm " "	
28 lb	13A1.5	▪ Motor 1 ½ HP 575 3 phase 1800 rpm " "	
28 lb	13A2	▪ Motor 2 HP 220/440/575 3 phase 3600 rpm " "	
33 lb	13A3	▪ Motor 3 HP 575 3 phase 3600 rpm " "	
39 lb	13A-4.5	▪ Motor 4 ½ HP 220/440/575 3 phase 3600 rpm " "	
39 lb	13B-2	▪ Motor 2 HP <u>2 speed</u> 220/440/575 3 phase 1200/3600 rpm w /4 studs	

Wt	P/N	Description	
25 lb	13C	Stator	} See page 10
10 lb	13D	Rotor	
1 lb	13E	x Capacitor (Condenser), single phase only specify HP & RPM	
½ lb	13F	x Cover for capacitor	
1 oz	13H	x Reversing (Stationary) switch for motor, single phase only, in motor cover	
3 oz	13K	x Centrifugal switch	
2 oz	13L	Bearing for motor	
2 lb	13M	x Cover (end shield bell) for motor	
2 oz	13R	x Fan	
½ lb	13S	x Fan cover	
3 oz	15	x Motor stud – specify motor data – 4 req.	
1 lb	16	x Hoist cover, w /2 screws, nuts & capacity tag # 16A	
1 oz	16A	Tag for hoist cover, specify capacity	
1oz	17	■ Rubber gasket for hoist cover	
3 oz	22	Stripper plate	
1 oz	23/24	x Stripper screw w /lock washer + washer	
1 lb	25	Limit lever ¼ T to 3 T	
4 lb	25A	■ Limit lever w/ 2 screws all hoists w/chain guide, verify if 25E is damaged	
4 lb	25E	Chain guide, not assembled	
1 oz	26/26A	Yoke pin & Cotter pin	
1 oz	27	Lever bolt & nuts (2 req.)	
1 oz	36	Snap ring	
1 oz	37	Woodruff key	
1 oz	38B	Switch spring	
1 lb	38F	Limit switch, any voltage, for push-button & cord control hoist includes : 38B 38G 38H 41 41A 4243 44	
1 oz	38G	■ Micro limit switches, any voltage, w /plate for cord control or push-button hoist	
2 oz	38H	■ Micro switch only, any voltage	
1 oz	39	Contact or diode screw w /lock washer 8/32 x 5/8" long	
1 oz	39A	Screw w/ lock for transformer 8/32 x 1/4" long	
1 oz	40	Screw w /lock washer 10 – 24 x 3/8 " long	
13 lb	41A	Switch lever assembly	
14 lb	45	Steel frame casting	
1 oz	46	Gasket for steel casting	
1 oz	47/48	Cap screw w /lock washer	
2 lb	49	1/4 T Upper hook w / # 100 latch & 51 nut	
2 lb	49A	■ 1/2 T Upper hook w / # 100 latch & 51 nut	
2 lb	49B	■ 1 Ton Upper hook w / # 101 latch & 51 nut	
2 lb	49C	■ 1 ½ T. Upper hook w / # 101 latch & 51 nut	
3 lb	49D	■ 2 T Upper hook w / # 102 latch & 51 nut	
3 lb	49E	■ 3 T Upper hook w / # 103 latch & 51 nut	
3 lb	49F	■ 5 Tons Upper hook w / # 104 latch & 51 nut	
7 lb	49G	■ 6 Tons Upper hook w / # 105 latch & 51 nut	
7 lb	49H	■ 7 Tons Upper hook w / # 106 latch & 51 nut	
1 oz	51	Nut comes w /upper hook	

Wt	P/N	Description
3 oz	53	Oil seal
1 oz	54	Bearing
3 oz	55	Oil seal <u>for brake</u>
2 oz	56	Bearing ,smallest one, recommend to change each time transmission is opened
½ lb	57	Worm shaft 1, 2, 3, 4 or 5 threads, also required : 53 55 56 61 80 90 <u>if transmission is disassembled</u> : + 46 54 62 65 68 72 or 72A 73
3 oz	58	Cover plate : ¼ T to 1 ½ T 1 req. – 2 T & over 2 req.
1 oz	59/60	Cap screw w /lock washer
1 oz	61	Cover plate gasket
3 oz	62	Thrust bearing
¼ lb	63	x Worm gear 1, 2, 3,4 or 5 threads, also required : 53 55 56 61 80 90 <u>if transmission is disassembled</u> : + 46 54 62 65 68 72 or 72A 73 90
1 oz	64	Woodruff key
3 oz	65	Bearing
1oz	66	Snap ring
1.5 lb	67	x Single worm shaft, also required : 53 55 56 61 80 90 <u>if transmission is disassembled</u> : + 46 54 62 65 68 72 or 72A 73 90
1.5 lb	67A	x ■ Double worm shaft, also required : 53 55 56 61 80 90 <u>if transmission is disassembled</u> : + 46 54 62 65 68 72 or 72A 73 90
3 oz	68	Bearing
1 oz	69	Snap ring
2 oz	70	x Spacer
1.5 lb	71	x Single worm gear also required : 46 53 54 55 61 62 65 68 72 72A 73 80 90
1.5 lb	71A	x ■ Double worm gear hoist model ending by 12 22 32 42 52 62 also required : 46 53 54 55 56 61 62 65 68 72 72A 73 80 90
¼ lb	72	x Single row bearing ¼ T to 2 T – 2 T 1 fall see 72A
½ lb	72A	x ■ Double row bearing 2 T <u>1 fall</u> , 2 1/2 T & over
1 oz	73	Oil seal
2.5 lb	74A	Sprocket shaft also required : 46 53 54 55 56 61 62 65 68 72 72A 73 80 90
1 oz	75	Air vent 1/8" or pipe plug 3/8"
1 oz	77	Pipe plug 3/8"
1 oz	78	Pipe plug 1/8"
1 oz	80	Expansion plug 1 ¾"
20 lb	81	Housing, return to Vulcan for inspection
5 oz	83	Shim washer, set 7
1 oz	84	Snap ring
5 oz	85	Shim washer, set 7
1 oz	86	Snap ring
5 oz	87	Shim washer, set 7
1 oz	88	Snap ring
3 oz	89	Chain extension with bolt and washers
2 lb	90	Gear oil, 1 quart Spartan EP320 or equivalent
2 lb	90A	x ■ Synthetic gear oil for low temperature or 5 T + SHC 460 or equivalent 1 quart
2 lb	90B	Spray oil, chain lubricant 454 g

Wt	P/N	Description	
1.5 lb	94	Contactor 11 : 1 phase ¾ HP 3 phase 1 HP, 1 ½ HP, 2 & 3 HP	
2 lb	94AA	■ Contactor 18 : 1 phase 1.5 HP, 2 HP 3 phase 4.5 HP	
¾ lb	94AA1	x ■ Contactor 11 : 2 speeds	
2 oz	94A	■ Contactor coil 11 & 18 : 115 or 24 Volts	
2 oz	94C	■ Contactor point : CN 11 16 stationnary, 8 movable CN18 12 fix stationnary, 6 movable, 8 fix auxiliaries. 4 movable	
2 lb	95	Transformer, specify primary & secondary voltages	
5 oz	95A	Support for the fuses , 2 req.	
2 oz	95B	Fuse , 2 req.	
1 lb	97	Mounting plate	
2 oz	98/99	Nut & stud for mounting plate, 3 req.	
1 oz	100	Safety latch ¼ T & ½ Ton	
1 oz	101	Safety latch 1 T & 1 ½ Ton	
1 oz	102	Safety latch 2 Tons	
2 oz	103	Safety latch 3 Tons	
2 oz	104	Safety latch 5 Tons	
3 oz	105	Safety latch 6 Tons	
3 oz	106	Safety latch 7 Tons	
4 oz	110	x ■ Thermal overload protection relay	
2 – 3 lb	115L	■ Chain container w /bracket	
1 lb	116	■ Bracket for chain container	
2 lb	117	■ Rain cover for hoist	
10 lb	120	Disc brake assy 121 to 131	} See page 11
7 lb	121	Coil assy (magnet) 24 volts DC	
1 ¼ lb	122	Armature plate	
1 lb	123	x Back plate	
1 oz	124	Assembly bolt, 3 req.	
½ lb	125	Drive hub	
1 oz	125A	Drive hub spring	
1 oz	126	Torque spring, 6 req.	
1 oz	127	Separator spring, 3 req.	
4 oz	128	x Friction disc	
1 oz	129/130	Mounting bolt w /nut, 3 req.	} See page 8 & 9
2 oz	131	Diode – (rectifier) (bridge) to change AC to DC	
½ lb	140	Limit switch assy 142 to 154	
2 oz	142/143	Limit body in plastic w /bolts + washer	
1 oz	145/146	x Limit wheel adjustment bar w /2 screws	
2 oz	148/149 A,B,C,D	Limit shaft w /gear, nut & spring pins (2 req.)	
1 oz	151	Limit adjustment nut,2 req. specify fine or coarse thread	
1 oz	153/154	Limit switch (2 req.) w /2 screws each	
1 oz	156	Limit sprocket worm comes w/ # 74A	
1 oz	158	Seal for limit switch	

➔ x When ordering parts, always specify MODEL & SERIAL NO. of hoist.
When returning hoist to Vulcan, please include chain & hook even if these parts are in good condition.

■ Not illustrated

Bottom Hook Part List

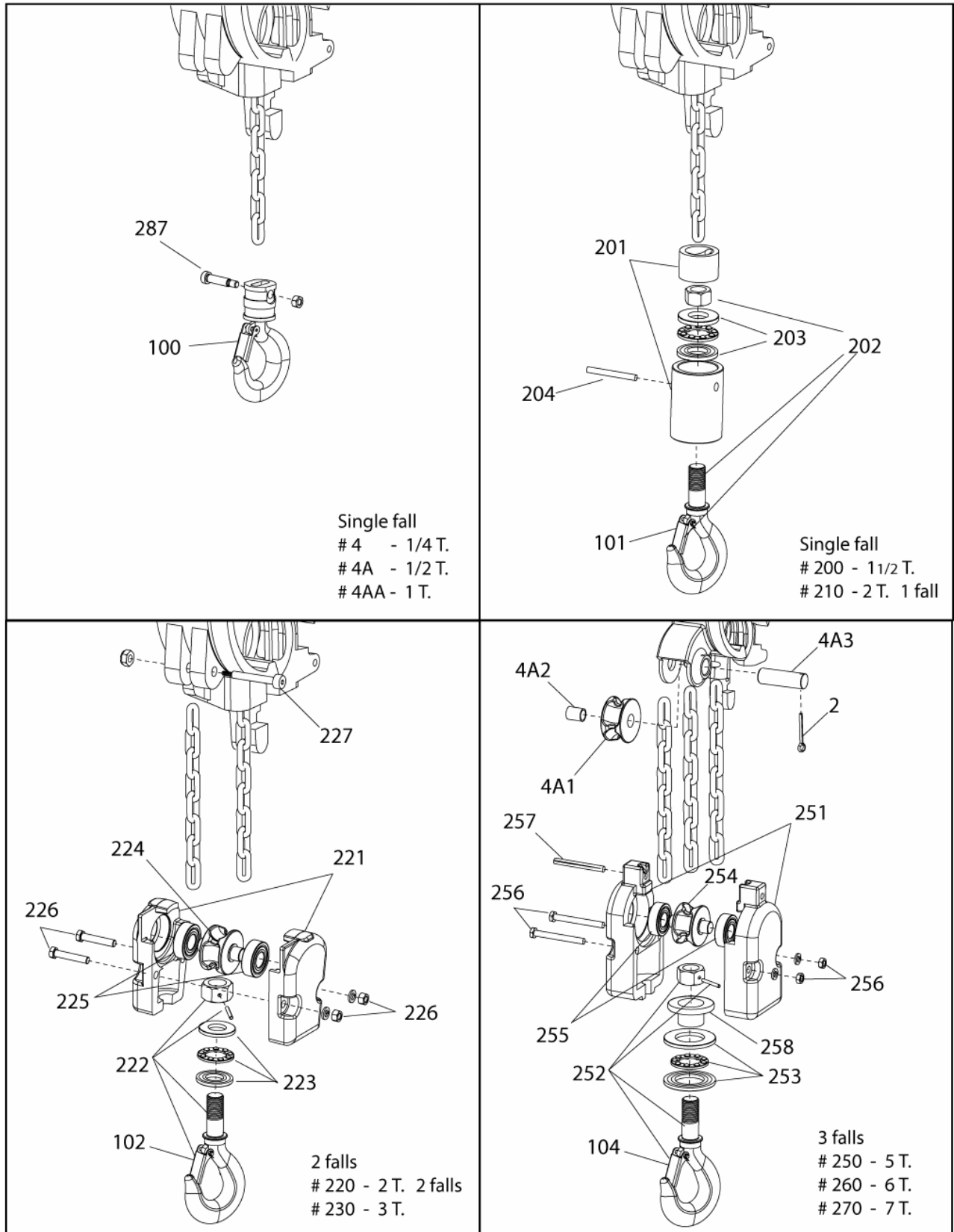
Capacity			1 fall of chain
¼ T.	½ T.	1 T.	Description
Part #			
4	4 A	4AA	Hook complete with latch + anchor pin
287	287	287	Anchor pin
100	100	101	Safety latch

Capacity		1 fall of chain
1.5 T.	2 T.	Description
Part #		
200	210	Complete hook w / latch + anchor pin
201	211	Chain holder, hook body
202	212	Hook & nut w/latch
203	213	Thrust bearing (3 parts)
204	214	Anchor pin
101	102	Safety latch

Capacity		2 falls of chain
2 T.	3 T.	Description
Part #		
220	230	Complete hook w / latch + anchor pin
221	231	Side cheeks
222	232	Hook, nut & spring pin w / latch
223	233	Thrust bearing (3 parts)
224	234	Sprocket
225	235	Sprocket bearing (2)
226	236	Bolts, lock washers & nuts (2 each)
227	237	Anchor pin
102	103	Safety latch

Capacity			3 falls of chain
5 T.	6 T.	7 T.	Description
Part #			
250	260	270	Complete hook w / latch + anchor pin
251	261	271	Side cheeks
252	262	272	Hook, nut & spring pin w / latch
253	263	273	Thrust bearing (3 parts)
254	264	274	Sprocket
255	265	275	Sprocket bearing (2)
256	266	276	Bolts, lock washers & nuts (2 each)
257	267	277	Anchor pin
258	268	278	Thrust bushing
104	105	106	Safety latch

Bottom Hooks Assemblies



AJUSTEMENT DES INTERRUPTEURS DE FIN DE COURSE VULCAN

Les interrupteurs de fin de course sont ajustés à la manufacture.

L'interrupteur de fin de course supérieur, côté engrenage (fils blancs).

L'interrupteur de fin de course inférieur, côté écrou (fils noirs).

Pour ajuster l'interrupteur supérieur, enlever le # 145 :

Pour que le crochet arrête plus bas : le # 151 qui est le plus près de l'engrenage, tournez-le plus près du # 153 (fils blancs).

Pour que le crochet arrête plus haut : le # 151 qui est le plus près de l'engrenage tournez-le plus loin du #153 (fils blanc).

N.B. S'assurer que le crochet ne touche pas au palan.

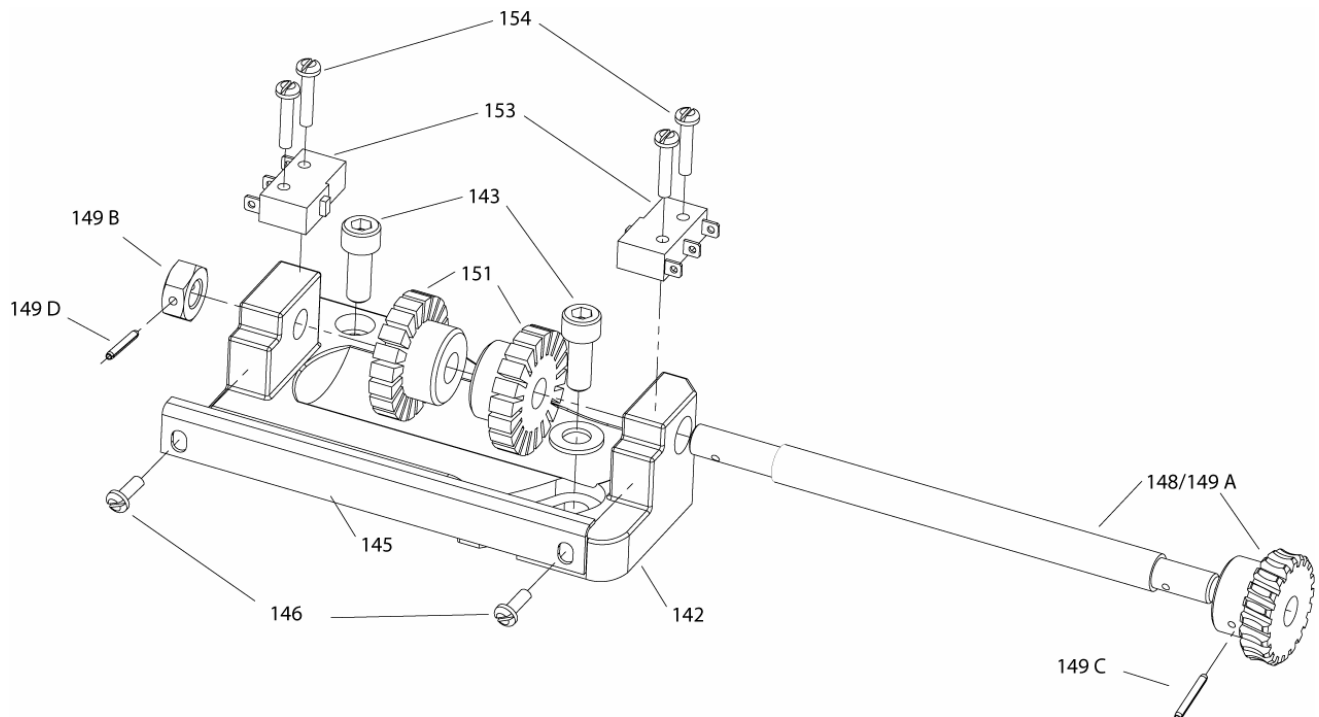
Pour ajuster l'interrupteur inférieur, enlever le # 145 :

Pour que le crochet arrête plus haut : le # 151 qui est le plus près du # 149, tournez-le plus près du # 153, (fils noirs).

Pour que le crochet arrête plus bas : tourner le # 151 en vous éloignant du # 153 (fils noirs).

N.B.: Laisser au moins 6" de chaîne en arrière.

Réinstaller le # 145 dans les deux # 151 et faire fonctionner le palan; faire le cycle complet, deux fois, en vérifiant les interrupteurs supérieur et inférieur.



ADJUSTING YOUR VULCAN ADJUSTABLE LIMIT SWITCHES

Limits are factory adjusted.

Up limit is gear end, (white leads.)

Down limit is nut end, (black leads.)

To adjust upper limit, remove # 145 :

To lower hook stopping point : the # 151 closest to gear, turn it closer to # 153 (white leads).

To raise hook stopping point : turn # 151 away from # 153 (white leads).

P.S. Make sure that the hook will not hit the hoist.

To adjust lower limit, remove # 145 :

To raise hook stopping point : the # 151 that is the closest to # 149, turn it closer to # 153 (black leads).

To lower lowest position of hook : turn # 151 away from # 153 (black leads).

P.S.: Leave 6" of chain on dead end of chain.

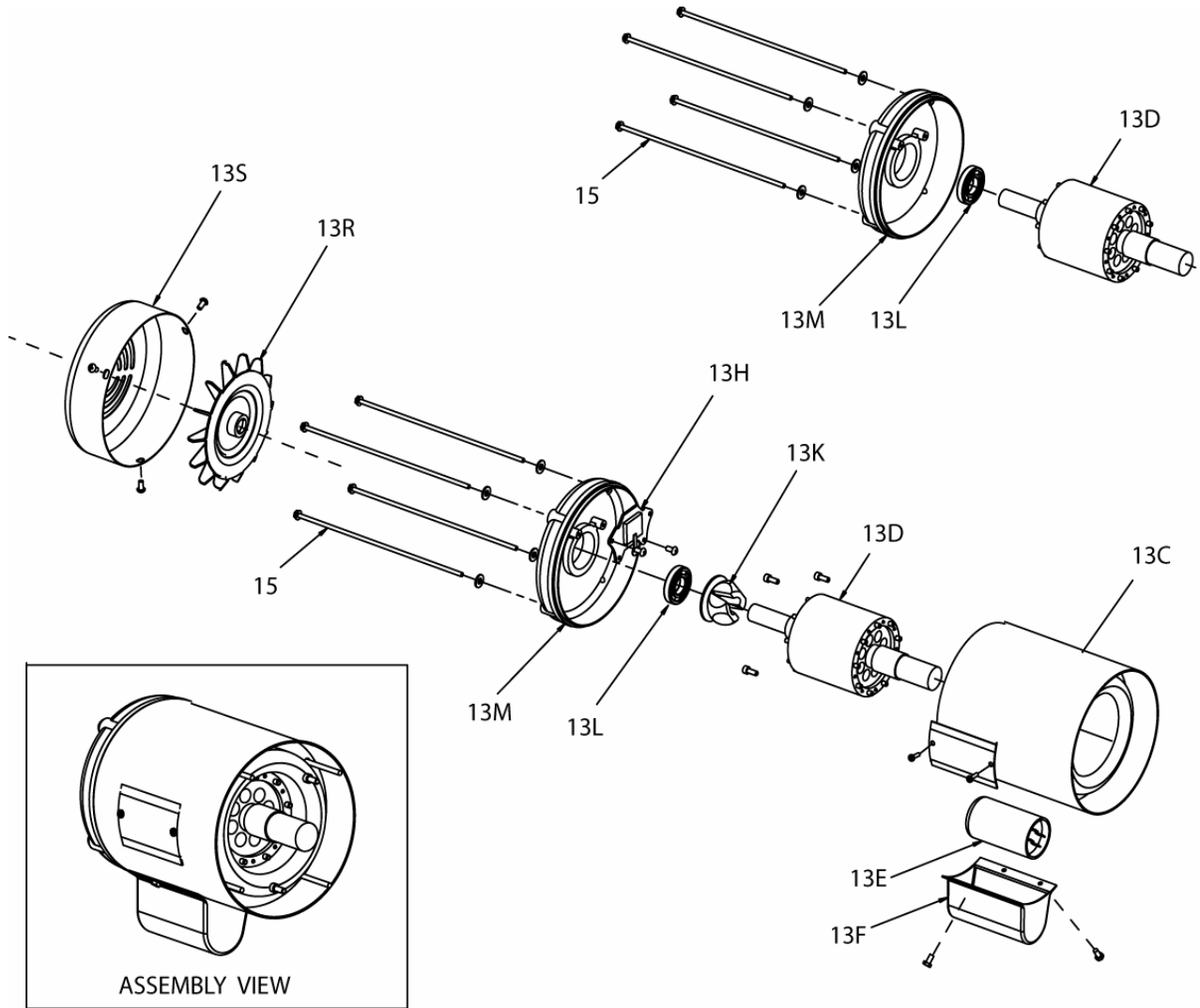
Reinstall # 145 in both # 151, run hoist twice through complete chain, checking upper & lower limits.

140	Limit switch assy (# 142 to # 154)
142/143	Limit body in plastic w/bolts & washers
145/146	Limit wheel adjustment bar w/2 screws
148/149 A,B,C,D	Limit shaft w/gear, nut & spring pins (2 req.)
151	Limit adjustment nut 2 req. - lifting height required
153/154	Limit switch (2 req.) w/2 screws each

MOTORS

Single phase (simple phase) 115/230 Volts

Three phase (3 phase) 208/230/380/460/575 Volts



- 13** Motor
- 13C** Stator
- 13D** Rotor
- 13E** Capacitor
- 13F** Cover for capacitor
- 13H** Reversing switch for motor single phase only
- 13K** Centrifugal switch w/spring for motor single phase only
- 13L** Bearing for motors
- 13M** Cover (End shield bell)
- 13R** Fan
- 13S** Fan Cover
- 15** Motor stud (4)

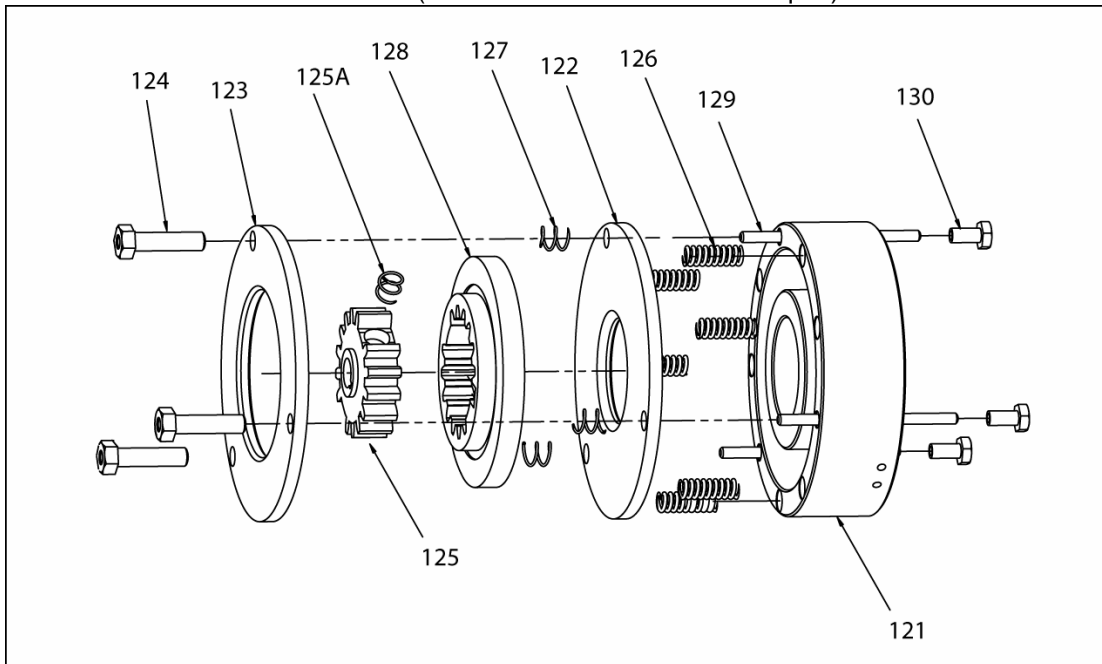
FREIN À DISQUE

- 120 COMPLETE BRAKE ASSEMBLY
- 121 COIL ASSEMBLY
- 122 ARMATURE PLATE
- 123 BACK PLATE
- 124 ASSEMBLY BOLTS 3 req.

DISC BRAKE

- 125 DRIVE HUB
- 125 A DRIVE HUB SPRING
- 126 TORQUE SPRINGS 6 req.
- 127 SEPARATOR SPRINGS 3 req.
- 128 FRICTION DISC
- 129/130 MOUNTING NUTS & BOLTS 3 req.

DISC BRAKE ASSEMBLY (vue d'ensemble du frein à disque) #120



AJUSTEMENT DU FREIN À DISQUE

Ajuster le frein lorsque l'écart d'air atteint 50 millièmes de pouce.

1) Ajustement adéquat : 10 millièmes d'écart entre la bobine 121 et la plaque d'armature 122.

2) Pour ajuster le frein : desserrer les 3 écrous 130 en sens contraire d'une horloge et les 3 boulons 124 en sens contraire d'une horloge, jusqu'à ce que l'écart atteigne 12 millièmes. Ensuite, resserrer les 3 écrous 130 dans le sens d'une horloge, jusqu'à ce qu'ils soient bien serrés.

Assurez-vous que l'écart entre la bobine 121 et la plaque d'armature 122 atteigne 10 millièmes en tout point.

ADJUSTMENT OF DISC BRAKE

Adjust the brake when the air gap becomes 50 thousands of an inch.

1) Proper adjustment : 10 thousands air gap between coil assembly 121 and armature plate 122.

2) To adjust brake : loosen the 3 mounting nuts 130 c.c.w. and turn the 3 assembly bolts 124 c.c.w. until you obtain an air gap of approx. 12 thousands. Then, turn the 3 mounting nuts 130 c.w. until tight.

Double check air gap between coil 121 and armature plate 122. It should be 10 thousands at every point